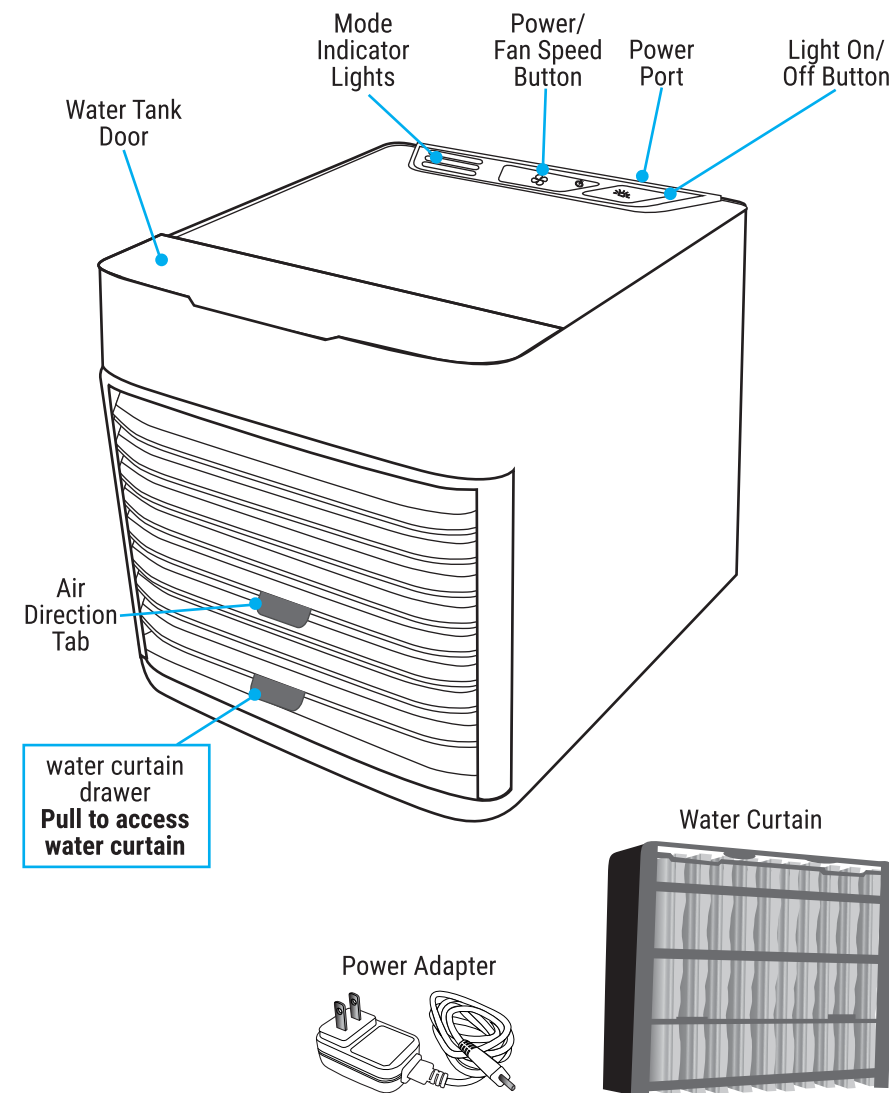




DESKTOP AC ULTRA USER MANUAL

WHAT'S INCLUDED:

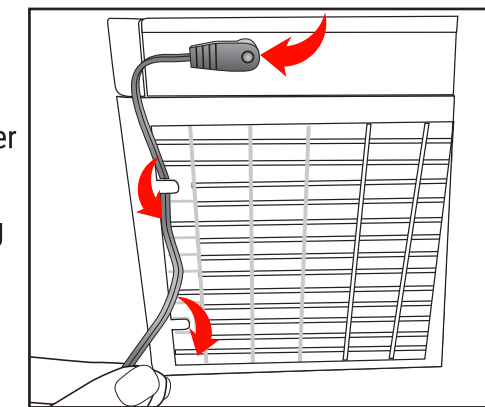


01

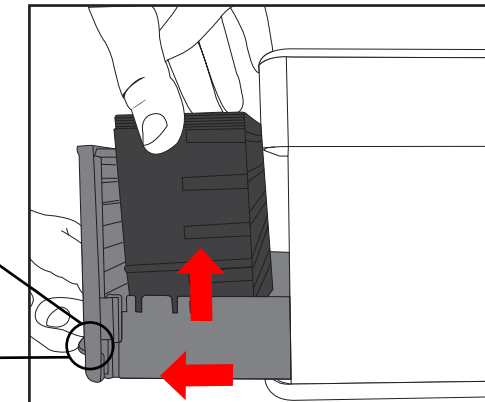
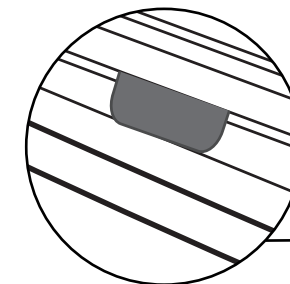
SETUP:

1. Set Blaux Desktop AC Ultra on a flat surface such as a table or desk. Attach Power Adapter to Power Adapter Port, and plug Power Adapter into wall outlet.

NOTE: Use built-in Cord Guides along back to keep cord away from fan.

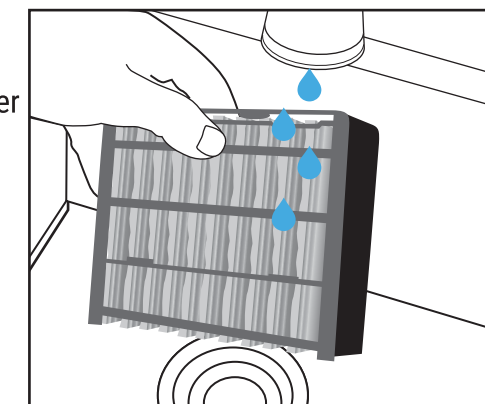


2. Use the water curtain drawer Tab to pull out the water curtain drawer & remove water curtain.



3. For best results, lightly pre-soak under cold, running water. For even more cooling power, place a wet water curtain in the freezer until frozen.

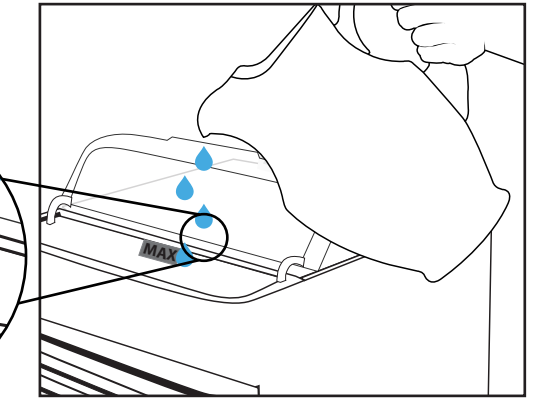
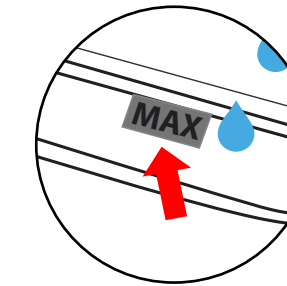
Place back in drawer when done.



02

SETUP (CONT.):

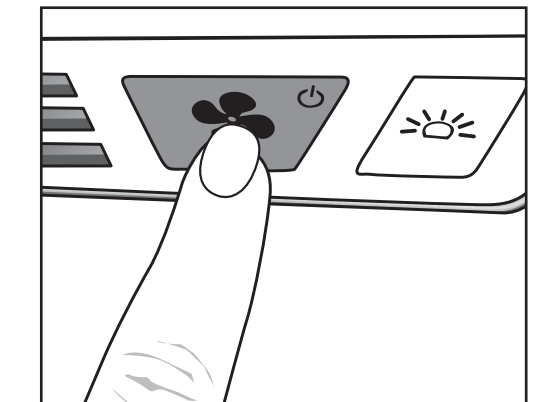
4. Open Water Tank Door and fill until line on MAX FILL tab. Close Water Tank Door when done.



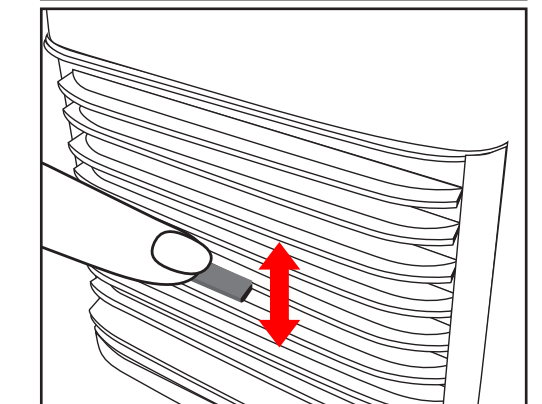
USAGE:

1. Press the  button to turn Blaux Desktop AC Ultra on - it will default to High speed mode.

- 1st press: Power on, High
- 2nd press: Medium
- 3rd press: Low
- 4th press: Power off



2. Use the Air Direction Tab to adjust airflow up/down to your preference.

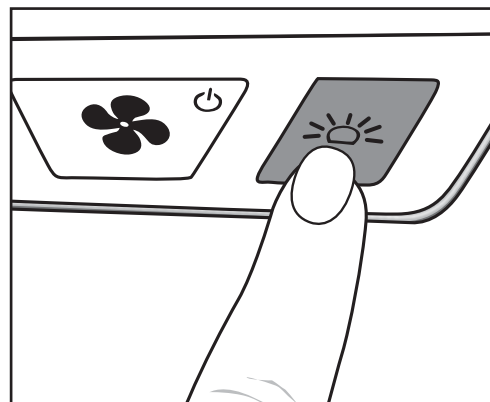



03

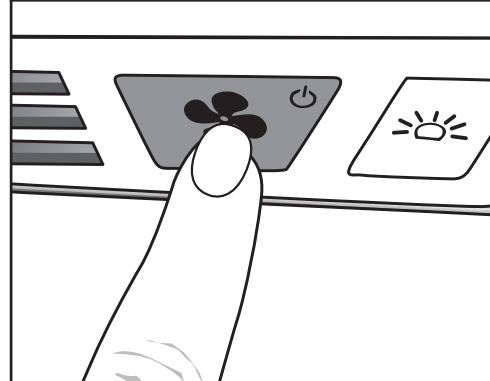
USAGE (CONT.):

3. Choose night light setting by pressing  button - default setting is High brightness.

- Default: Light on, High brightness
- 1st press: Low brightness
- 2nd press: Light off



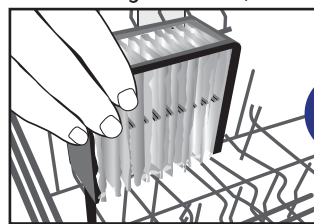
4. To power off, press the  button until fan turns off (one press after Low speed), and Mode Indicator Lights are no longer lit.



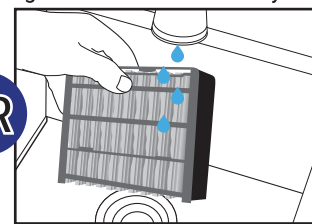
IMPORTANT: If you do not plan to use Blaux Desktop AC Ultra for an extended period of time, it is recommended that you empty and let unit & water curtain dry before storing. This will avoid mold and unpleasant smells, and prolong life of Blaux Desktop AC Ultra and the water curtain.

MAINTENANCE:

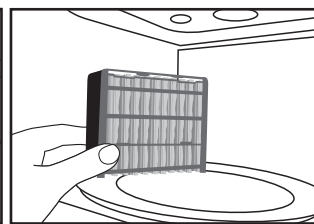
We recommend weekly cleaning of your Blaux Desktop AC Ultra and water curtain to keep in best working condition, and replacing the water curtain every 3-6 months.



DISHWASHER: Place water curtain in the top-rack of your dishwasher & run cycle normally. Remove and let air dry.



HAND WASH: Hand wash gently with warm water & soap. Shake out excess water & let air dry.



MICROWAVE: Between washes, sanitize your water curtain by placing in microwave on high for 30 second increments, up to 2 minutes. Let sit until cool.

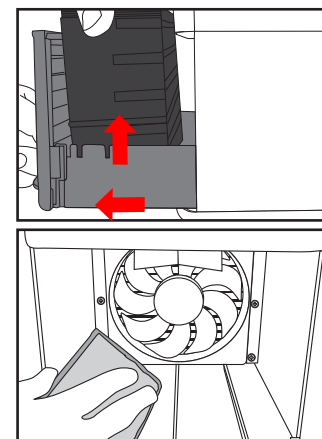
04

MAINTENANCE:

IMPORTANT: If you see mold on the water curtain or notice a musty smell, stop and clean the water curtain before further use. Fully submerge the water curtain in a pot or bowl filled with equal parts clean water and white vinegar – allow to soak for 45-60 minutes. Rinse with warm water, wring out and let air dry

UNIT CLEANING

- To prepare for cleaning, run Blaux Desktop AC Ultra until all water has emptied from the water tank, or hold Blaux Desktop AC Ultra over a sink and carefully dump out to avoid splashing or spilling.
- Remove water curtain tray from Blaux Desktop AC Ultra. Using warm, soapy water, wipe filter tray and grill, then rinse off until clean. Let air dry.
- If you notice water tank is dirty, use a small, bendable brush (i.e. toothbrush, bottle brush, etc) and carefully clean the inside of the tank until clean. Rinse clean with warm water.



WARNINGS:

- Do not carry Blaux Desktop AC Ultra when filled with water. Some water may remain in unit even if tank is empty.
- Use only clean water. If needed, use distilled water.
- Please read and follow regular maintenance as recommended in "Maintenance" section of this guide.
- Blaux Desktop AC Ultra works best in non-polluted areas. Large dust/dirt particles may reduce lifetime of unit.
- We recommend use only in dry locations. If using in a moist area or environment, take care not to get water on external areas of the product.
- If a leak or spill occurs on the surface of device, unplug Blaux Desktop AC Ultra & let it dry for 24 hours. Then, use as normal.
- Do not place in direct sunlight for extended periods of time.

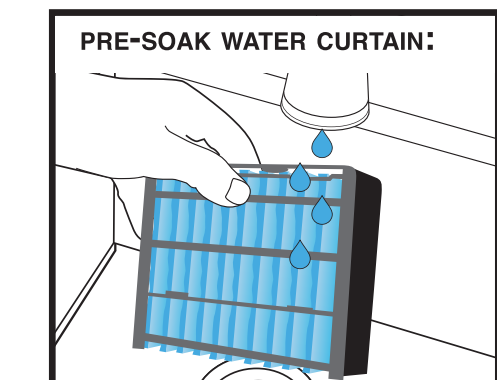
05

WARNINGS:

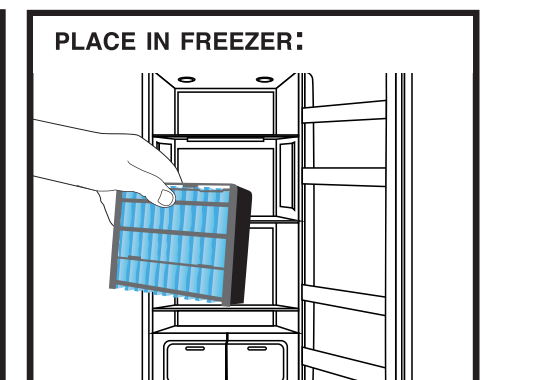
- Before not using Blaux Desktop AC Ultra for extended periods of time, empty the water tank, turn unit on, and set to highest fan speed for at least 4 hours. This will dry out then water curtain and inside of your unit.
- Only use the original power adapter and cord supplied in package.
- Do not touch the power supply or power cord with wet hands.
- Unplug Blaux Desktop AC Ultra when cleaning, removing/replacing water curtain, or moving the device.
- For best results, place Blaux Desktop AC Ultra on a higher surface like a table or countertop.
- Do not place Blaux Desktop AC Ultra near a heater or any electrical equipment.
- Do not place the device in passageways or high traffic areas where there is a possibility of tripping or knocking it over.
- Do not allow any foreign objects inside Blaux Desktop AC Ultra.
- Do not place items on top Blaux Desktop AC Ultra.
- Do not block the front and back grills of the device.
- Do not turn the device upside down.
- Do not submerge the Blaux Desktop AC Ultra under water or other liquids.
- Do not place Blaux Desktop AC Ultra near open flames or fire sources.
- People with limited physical, visual or mental abilities or lacking proper experience and/or knowledge should never use the device without supervision of those responsible for their safety or those capable of assistance in using the device.
- The device can be switched off completely only when disconnected from the power supply.
- The manufacturer does not bear any responsibility for any damage from failure to comply with this product guide.
- A replaceable water curtain is designed specifically for this product. If your cartridge has been broken or damaged, you can purchase a replacement.

06

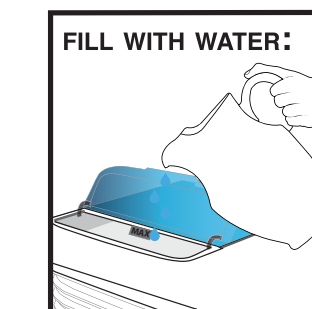
FOR BEST RESULTS:



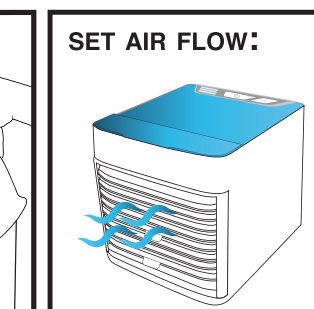
To **ACTIVATE COOLING**, soak your water curtain under running cold water.



For **MAXIMUM COOLING**, place a wet water curtain in the freezer until frozen.



Place on flat surface & fill tank with water.



Point towards you, and adjust the vents to direct air flow.



See product guide for Care & Cleaning instructions.

Please Note: You may notice some condensation forming on the front grill. This is normal.

SUPPORT HELP CENTER

Please visit <https://support.blastauxiliary.com> or scan the QR code below for any urgent requires!



07